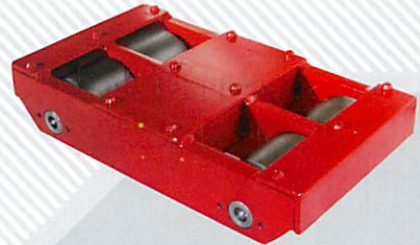


## // SKATES AND ROLLERS

### // Equipment Corps Skates

Designed in response to customer demands for a better performing skate, the ECS line of machinery moving dollies combines the reliability of a tapered roller bearing system in an engineered design built to ensure the safe handling of the load you are moving with the confidence that the skates will be ready for the next job. Available in both steel and poly configuration with capacities to 100 tons.



### // Hillman Rollers

The Hillman family of skates offer different advantages. Their narrow profile make them excellent for running in C-channel or on beams high in the air. Assembling automotive spray booths and rolling mobile homes down an assembly line are just two applications where this type of skate is utilized. Swivel tops models are a popular choice for riggers and maintenance crews.

